

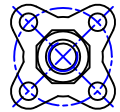
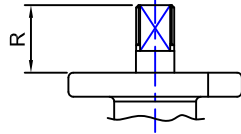
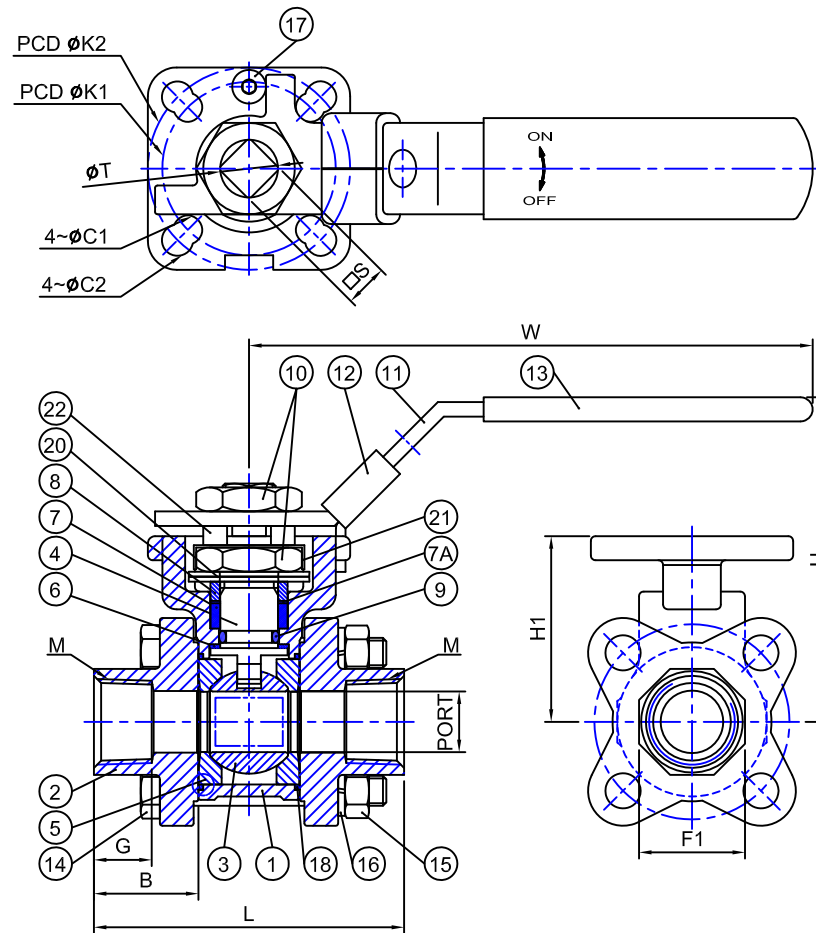
Fig No:

PB-3110H

MATERIAL LIST

NO.	PART NAME	MATERIAL	Q'TY
		STAINLESS STEEL	
1	BODY	A351-CF8M	1
** 2	CAP	A351-CF3M	2
** 3	BALL	A351-CF8M	1
** 4	STEM	SS316	1
** 5	SEAT	RPTFE	2
6	THRUST WASHER	PTFE	1
7	STEM PACKING	PTFE	1SET
7A	PACKING PROTECTOR	50% PTFE + 50% 316	1
8	SLEEVE	SS304	1
9	O-RING	Viton	1
10	THIN NUT	SS304	2
11	HANDLE	SS304	1
12	LOCKING PAD	SS304	1
13	HANDLE COVER	PLASTIC	1
** 14	BOLT	B8M	4
** 15	NUT (2)	8M	4
** 16	SPRING WASHER (2)	SS316	4
17	SET SCREW	SS304	1
** 18	GASKET	PTFE	2
20	DISK SPRING WASHER	SS301	2
21	LOCK WASHER	SS304	1
22	QUADR WASHER	SS304	1

** This part can be used on 1030



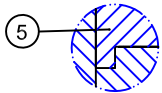
For 1/4" ~ 2"



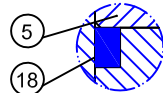
For 1/2" ~ 1-1/4"
STEM PACKING



For 1-1/2" ~ 2"
STEM PACKING



For 1/4" ~ 1/2"



For 3/4" ~ 2"

DIMENSIONS

unit:mm

SIZE	PORT	F1	B	G	L	H1	H	W	K1	K2	C1	C2	S	T	R	M	CV	Torque (kgf-cm)	Weight (kgs)	ISO5211
1/4"	12.6	22	21.7	12	66	41	70.3	129	36	42	6	6.5	9	12	9.2	NPT	21	51		F03/F04
3/8"	12.6	22	21.7	12	66	41	70.3	129	36	42	6	6.5	9	12	9.2	NPT	24	51		F03/F04
1/2"	15	27.2	21	13	64.6	41	70.3	129	36	42	6	6.5	9	12	9.2	NPT	37	71.4	0.71	F03/F04
3/4"	20	33.7	25.4	19.6	80.8	44.1	73.4	129	36	42	6	6.5	9	12	9.2	NPT	68	101.9	0.91	F03/F04
1"	25	40	28.3	18	94.9	55.9	85.1	167	42	50	6.5	7.8	11	14	11.2	NPT	109	153	1.37	F04/F05
1-1/4"	32	48.6	30.2	19	109.7	61.1	90.3	167	42	50	6.5	7.8	11	14	11.2	NPT	185	214.1	2.1	F04/F05
1-1/2"	38	55.5	35.7	25	129.6	74.8	105.8	192.5	50	70	7.8	10	14	18	15	NPT	268	356.9	3.12	F05/F07
2"	50.8	67.6	38.4	27	148.7	84	115	192.5	50	70	7.8	10	14	18	15	NPT	486	571	4.53	F05/F07

Pressure VS. Temperature Chart

